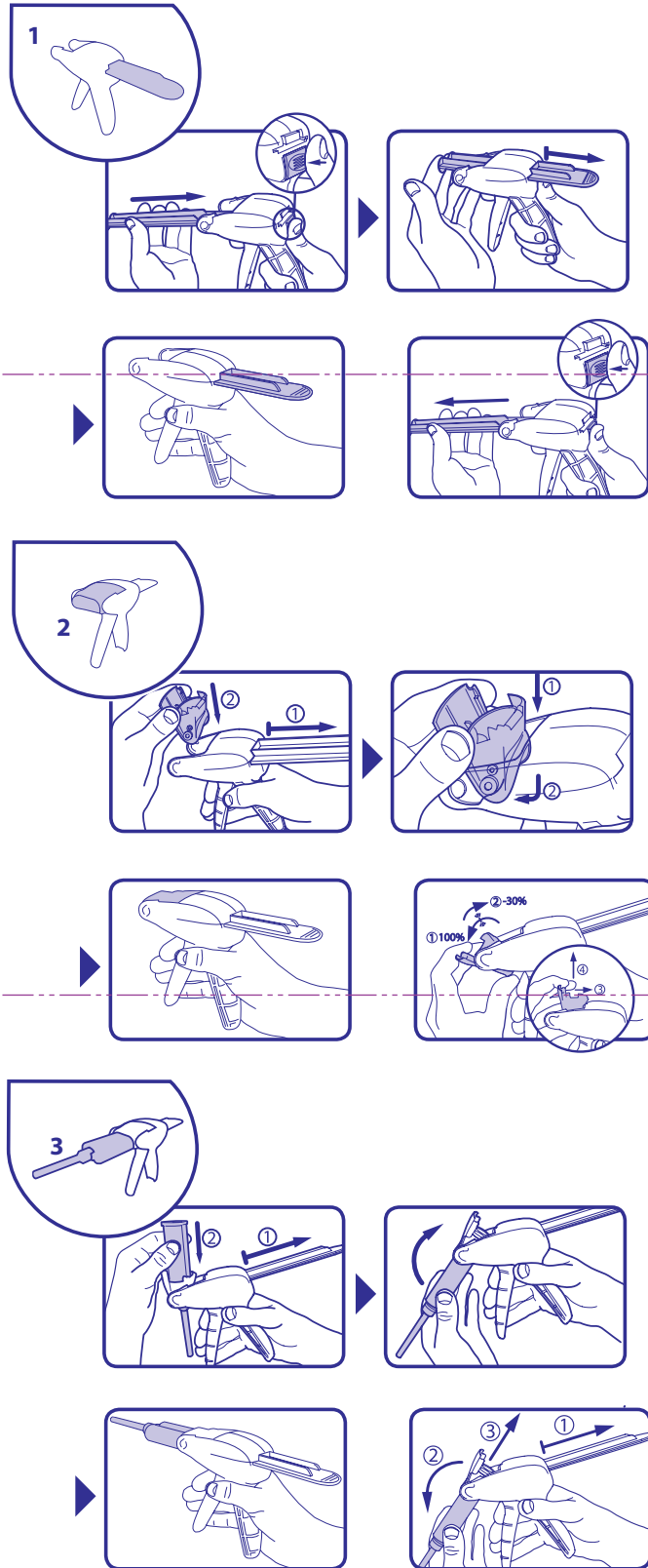


Bosworth E-Z Squeeze™ Universal Cartridge Dispenser Instructions For Use

For 75 ml cartridges: 1:1.

For 50 ml cartridges: 1:1/2:1, 4:1/10:1.

For 25 ml cartridges: 1:1/2:1 plus adaptor.



Bosworth Company

Universal Cartridge Dispenser

Bosworth E-Z Squeeze™

Bosworth Company

Please forward health & safety questions to:

Veillez nous faire parvenir vos questions en matière de santé de sécurité à:

Fragen zur Gesundheit und Sicherheit richten Sie bitte an:

Inviare domande relative alla sicurezza alla salute a:

Para quaisquer questões de saúde e segurança contactar:

Por favor dirija preguntas salud y seguridad a:

The Harry J. Bosworth Company
7227 North Hamlin Avenue
Skokie, IL 60076-3999 USA

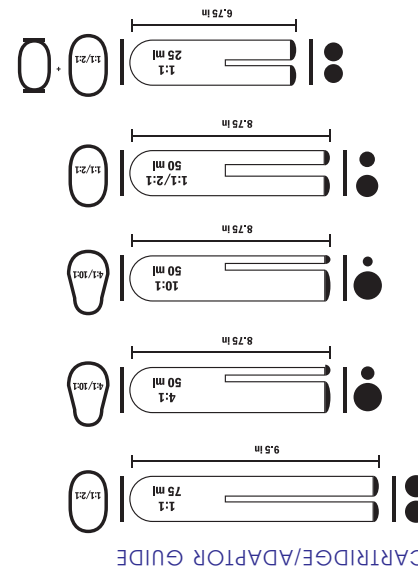
OR

EC REP
F. Moore
Unit 3
Halldene Way
Seaham Grange Ind Estate
Seaham
Co Durham
SR7 0PU England

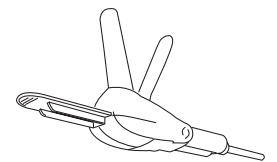
(800) 323-4352 • (847) 679-3400 • Fax (847) 679-2080
bosworth.com • hjbinfo@bosworth.com



0612PR1809



CARTRIDGE/ADAPTOR GUIDE



0921809 E-Z Squeeze Universal Cartridge Dispenser

ORDERING INFORMATION